

**Immediate Occupancy
Still Time to
Pick Carpet**

Welcome to 72 Elm Avenue

Located in
Bethlehem
and
Proudly Offered
for \$319,900



Move Right In!

Tremendous New Construction Opportunity!

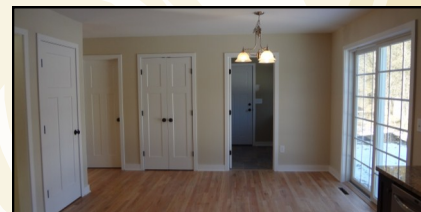
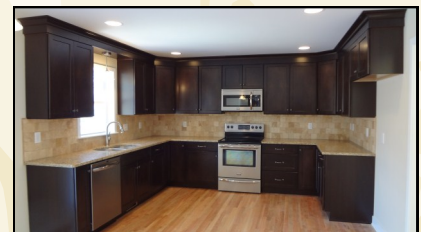
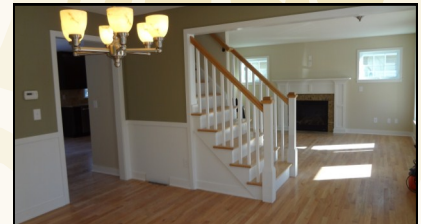
This Craftsman Colonial is Loaded.

- ✓ Open Kitchen/Dinette with Maple Cabinetry, Granite Counters, Tile Backsplash, and Stainless Appliances, including Range with Oven, Dishwasher, Microwave, and Disposal
- ✓ Family Room w/Gas Fireplace
- ✓ Formal Dining Room
- ✓ Roomy Master Suite with Walk-In Closet, Paddle Fan, Double Bowl Vanity, and Custom Tiled Shower
- ✓ Solid Oak Flooring Throughout First Floor, Oak Treads on Stairs
- ✓ Patio Doors to Private Rear Yard, Covered Front Porch
- ✓ 1st Floor Laundry w/Utility Sink
- ✓ Basement Egress Window Well with Rec Room Framing in Place
- ✓ 2 Car Garage w/Carriage Style Doors
- ✓ Central Air

Make this home yours today!

NEW CONSTRUCTION

3 Bedrooms
2.5 Baths
Approx. 1800Sqft
Large Private Lot
Bethlehem Schools
Public Water & Sewer
Natural Gas

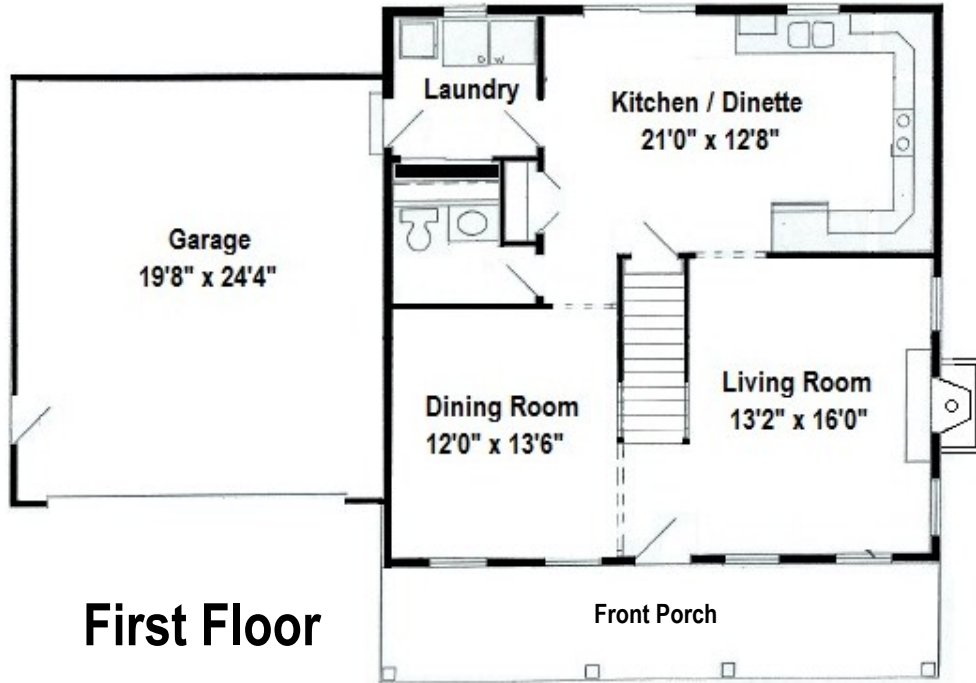


For Additional Information, Please Contact:

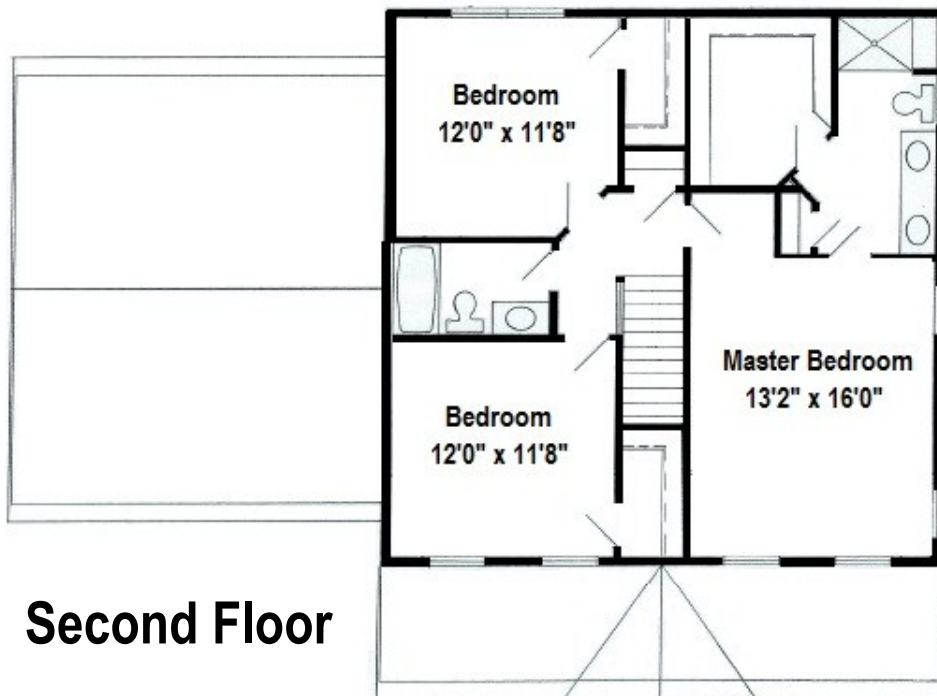
Aileen Loy
Associate Broker
518-368-3076
aileenloy@nycap.rr.com



Toni Sirtori
Associate Broker
518-428-4848
sirtori@nycap.rr.com



First Floor



Second Floor